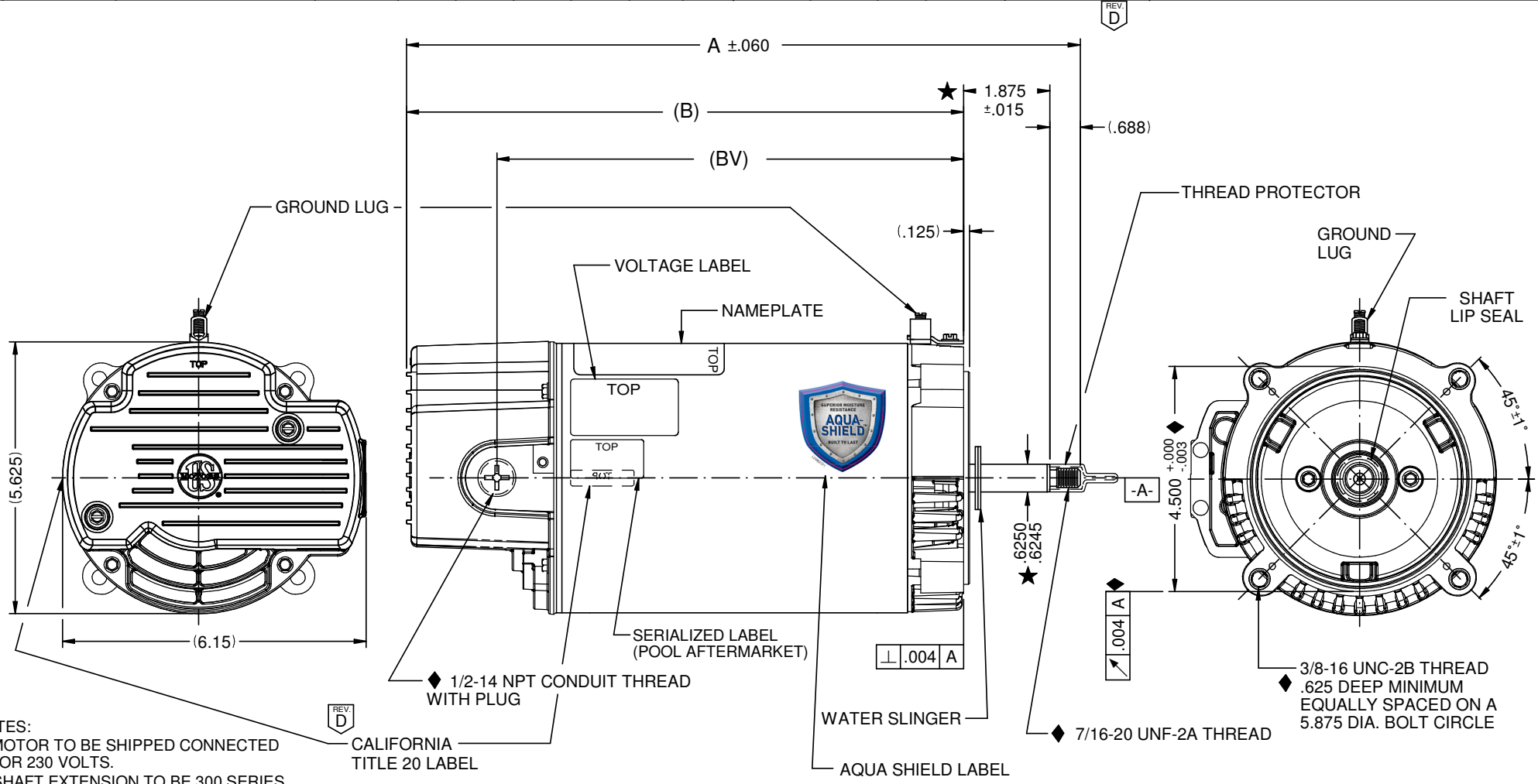




Catalog #: AST165

Model Number:	C055JMG2155013J
PRODUCT NAME:	1.65 HP - ODP - 3450
PHASETYPE:	1_CAPACITOR START
MOTOR ENCLOSURE:	ODP
HORSEPOWER:	1.65
POLES:	2
NUMBER SPEEDS:	1
RPM:	3450
HERTZ:	60
VOLTS PRIMARY:	230/115 V
VOLTS :	230
VOLTS 2:	115
FRME :	56
SHAFT CODE:	J
STATOR DIAMETER:	5.5
STACK:	3.5
MOUNTING:	C-FACE
MOTOR TYPE:	FHP
OPPOSITE END BEARING:	6203
SHAFT END BEARING:	6203
AMBIENT:	50
ROTATION:	CCW DRIVE END
STARTCAPMFD:	198.45
SHIPPING WEIGHT:	24
THERMAL PROTECTION:	AUTOMATIC RESET
BREAKDOWN TORQUE:	105.9
BREAKDOWN TORQUE UOM:	OZFT
LOCKED ROTOR TORQUE:	30.34
LOCKED ROTOR TORQUE UOM:	OZFT
INSULATION CLASS:	B
KVA CODE LETTER:	J
LOCKED ROTOR AMPS:	44.2
FULL LOAD AMPS PRIMARY:	8.5/17.0

VAR	MODEL	CUSTOMER	CAT. NO.	A	B	BV	XN	XH	THP	VOLTS	AMPS	HZ	RPM	CALIFORNIA TITLE 20 LABEL	DESCRIPTION / REMARKS
001	C55JXJMh-2156	POOL AFTERMARKET	AST095	13.89	11.33	9.36	N/A	N/A	0.95	230/115	5.5/11.0	60	3450	NON-COMPLIANT	
002	C55CXKTR-2129	POOL AFTERMARKET	AST125	14.89	12.33	10.36	N/A	N/A	1.25	230/115	7.0/14.0	60	3450	NON-COMPLIANT	
003	C55CXJMG-2155	POOL AFTERMARKET	AST165	15.39	12.83	10.86	N/A	N/A	1.65	230/115	8.5/17.0	60	3450	NON-COMPLIANT	



NOTES:
 1.) MOTOR TO BE SHIPPED CONNECTED FOR 230 VOLTS.
 2.) SHAFT EXTENSION TO BE 300 SERIES STAINLESS STEEL.
 NIDEC MOTOR CORPORATION 05-Dec-18

ROTATION: CCW DRIVE END

REFER TO S.E.I.M. 24-1

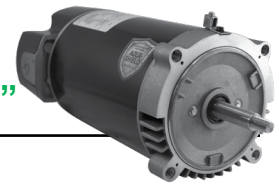
REVISION RECORD FOR:	
ECO E32740	
ADDED COLUMN "CALIFORNIA TITLE 20 LABEL" IN CHART.	
ADDED NOTE "CALIFORNIA TITLE 20 LABEL".	
ADDED CRIT.REQ. # 7	
ISSUED BY: I. GUTIERREZ	ENGINEER APPROVED: S.SCHINZING

TOLERANCES ON DIMENSIONS (UNLESS OTHERWISE SPECIFIED)	
INCHES .XX = ±.010 .XXX = ±.005	mm
ANGLES X° = ±1°	

NIDEC MOTOR CORPORATION			
INFORMATION DISCLOSED ON THIS DOCUMENT IS CONSIDERED PROPRIETARY AND SHALL NOT BE REPRODUCED OR DISCLOSED WITHOUT WRITTEN CONSENT OF NIDEC MOTOR CORPORATION			
TITLE		CODE	ITEM NO.
CUSTOMER DETAIL DRAWING		V02	810784
REV	SHEET NUMBER	DWG SIZE	REVISION DATE
D	1 OF 6	B	02-NOV-18

AQUA-SHIELD® EZ48® C-Flange Pool and Spa Motors

Switch Design, 5.5" Frame Diameter, Threaded Shaft: Category "J"



FEATURES:

- Two Compartment
- Triple Bearing Protection
- Thermally Protected
- 1081 Design
- Shaft Threads - 7/16-20 UNF-2A
- Class B Insulated
- Open Dripproof
- Continuous Duty
- 50°C Ambient
- 300 Series Stainless Steel Shaft
- Sealed Ball Bearings
- Voltage Selection Device (Dual Voltage Only)
- **Discount symbol: DS-FPS**



- Optimized internal airflow design minimizes heat and moisture buildup inside the motor
- Internal bearing cover protects the drive/pump end ball bearing from water and debris that may occur inside of the motor
- Three additional layers of drive/pump end bearing protection:
 - Double Sealed Ball Bearing
 - Lip Seal
 - Water Slinger

Standard Efficient, Total Horsepower Rated



THP	RPM	Voltage	Freq	SF Amps	Catalog Number	Motor Frame	Length Less Shaft	Wgt.	List
0.95	3450	230/115	60	5.5/11.0	AST095	56J	11.25	16	\$236
1.25	3450	230/115	60	7.0/14.0	AST125	56J	12.25	21	\$263
1.65	3450	230/115	60	8.5/17.0	AST165	56J	12.75	24	\$301
2.75	3450	208-230	60	12.3-11.3	AST275 [†]	56J	13.00	28.5	\$487

* California Energy Commission (CEC) Appliance Regulations (Title 20) compliant
 ** Contact dealer for full conditions of operation
 Catalog numbers are for competitive comparison purposes only.

▲ High Efficiency, Capacitor Start/Run Design

† All marks shown within this document are properties of their respective owners.